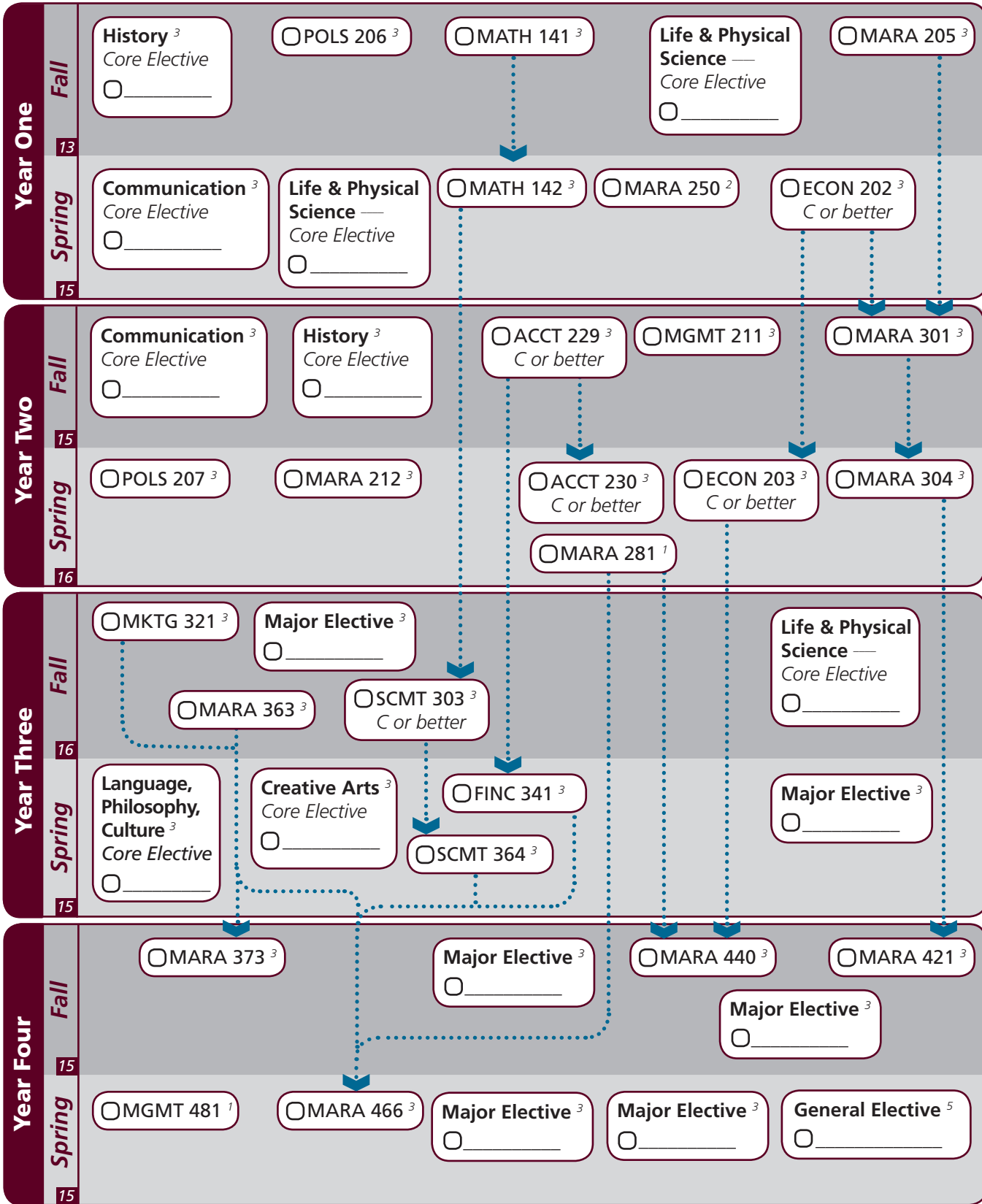


Notes: _____

- Foreign Language ⁶
- CAEX 001 ICD ³
- CAEX 004 ICD ³



I understand that the courses indicated on this sheet are required for my degree. If I change any of the course recommendations without consulting an academic advisor, it could affect my graduation timing, financial aid or could not count towards my degree.

Student Signature: _____ **Date:** _____

Academic Advisor Signature: _____ **Date:** _____

Key

- Pre-requisite
- Co-requisite
- ³ Course Credit Hrs
- ¹⁵ Semester Credit Hrs

Notes: _____

Major	<i>Texas A&M University at Galveston Course Options</i>					
Major Courses ⁵⁸	ACCT 229 MARA 250 MARA 421 SCMT 303	ACCT 230 MARA 281 MARA 440 SCMT 364	ECON 203 MARA 301 MARA 466	FINC 341 MARA 304 MGMT 211	MARA 205 MARA 363 MGMT 481	MARA 212 MARA 373 MKTG 321
Directed Electives ¹⁸ <i>Select 18 hours</i>	ACCT 315 MARA 401 MARA 460 MARA 491	ACCT 316 MARA 402 MARA 470 MARA 493	ECON 311 MARA 416 MARA 475 SCMT 336	ECON 323 MARA 424 MARA 484	ECON 452 MARA 435 MARA 485	MARA 342 MARA 450 MARA 489
A cumulative 2.0 GPR must be achieved on all major requirement courses						

Core	<i>Texas A&M University at Galveston Course Options</i>					
Communication ⁶ <i>Both courses required</i>	ENGL 104	ENGL 203				
Mathematics ⁶	<i>Select One:</i>	MATH 140	MATH 141			
	<i>Select One:</i>	MATH 142				
Life & Physical Sciences ⁹ <i>Select 9 credit hours</i>	ANTH 225 CHEM 106 GEOL 101 OCNG 252	ANTH 226 CHEM 107 GEOL 102 PHYS 201	BIOL 111 CHEM 111 GEOL 106 PHYS 202	BIOL 112 CHEM 112 KINE 120 PHYS 208	CHEM 101 CHEM 116 KINE 223 PHYS 218	CHEM 102 CHEM 117 OCNG 251
Language, Philosophy, Culture ³ <i>Select 1 course</i>	ANTH 316 ENGL 335 PHIL 251	<i>ENGL 204</i> <i>ENGL 338</i> <i>SPAN 201</i>	<i>ENGL 222</i> <i>ENGL 374</i> <i>SPAN 202</i>	<i>ENGL 253</i> <i>GEOG 202</i>	ENGL 330 <i>GEOG 301</i>	ENGL 334 HIST 242
Creative Arts ³ <i>Select 1 course</i>	<i>ARTS 150</i> <i>MUSC 226</i>	ENGL 212	<i>ENGL 251</i>	KINE 210	HISP 204	MAST 352
American History ⁶ <i>Both courses required</i>	HIST 105	HIST 106	HIST 226	HIST 232		
Govt/Political Science ⁶ <i>Both courses required</i>	POLS 206	POLS 207				

University	<i>Texas A&M University at Galveston Course Options</i>					
Writing Intensive ⁶	MARA 440	MARA 466				
International and Cultural Diversity ⁶ <small>Note that any blue marked major or core course will concurrently fulfill both requirements</small>	<i>Required:</i>	MARA 440				
	<i>Select One:</i>	ANTH 210	ARTS 150	COMM 365	ECON 452	ENGL 204
		ENGL 222	ENGL 251	ENGL 253	ENGL 338	ENGL 339
		FILM 251	GEOG 201	GEOG 202	GEOG 301	HIST 405
		MARB 340	MARB 407	MARE 400	MARR 400	MARS 210
		MARS 432	MART 400	MAST 411	MUSC 226	NAUT 400
		SOCI 205	SPAN 201	SPAN 202		POLS 366
General Electives ⁵	Free electives as needed to reach 120 cumulative hours					

Courses in this section can concurrently fulfill a Core or Major Requirement;
Two semesters of a single foreign language is required for students who did not complete the foreign language req in high school